

Measuring Progress in Equality and Human Rights

Dr Karen Hurrell
Statistician
24 February 2021

Background

- = EHRC is a statutory non-departmental public body established by the Equality Act 2006 and covering England, Scotland and Wales.
- = Required to report to Parliament at least every five years on Britain's progress in equality and human rights.
- = Our reviews are based on a Measurement Framework which specifies the topics we will consider and the types of evidence we should look at (legal and policy evidence, as well as statistical).

Measurement Framework structure – Domains & indicators

Education	Work	Living standards	Health	Justice and personal security	Participation
<ul style="list-style-type: none">• Educational attainment of children and young people• School exclusions, bullying and NEET• Higher education and lifelong learning	<ul style="list-style-type: none">• Employment• Earnings• Occupational segregation• Forced labour and trafficking*	<ul style="list-style-type: none">• Poverty• Housing• Social care	<ul style="list-style-type: none">• Health outcomes• Access to healthcare• Mental health• Reproductive and sexual health*• Palliative and end of life care*	<ul style="list-style-type: none">• Conditions of detention• Hate crime, homicides, sexual and domestic abuse• Criminal and civil justice• Restorative justice*• Reintegration, resettlement and rehabilitation*	<ul style="list-style-type: none">• Political and civic participation and representation• Access to services• Privacy and surveillance• Social and community cohesion*• Family life*

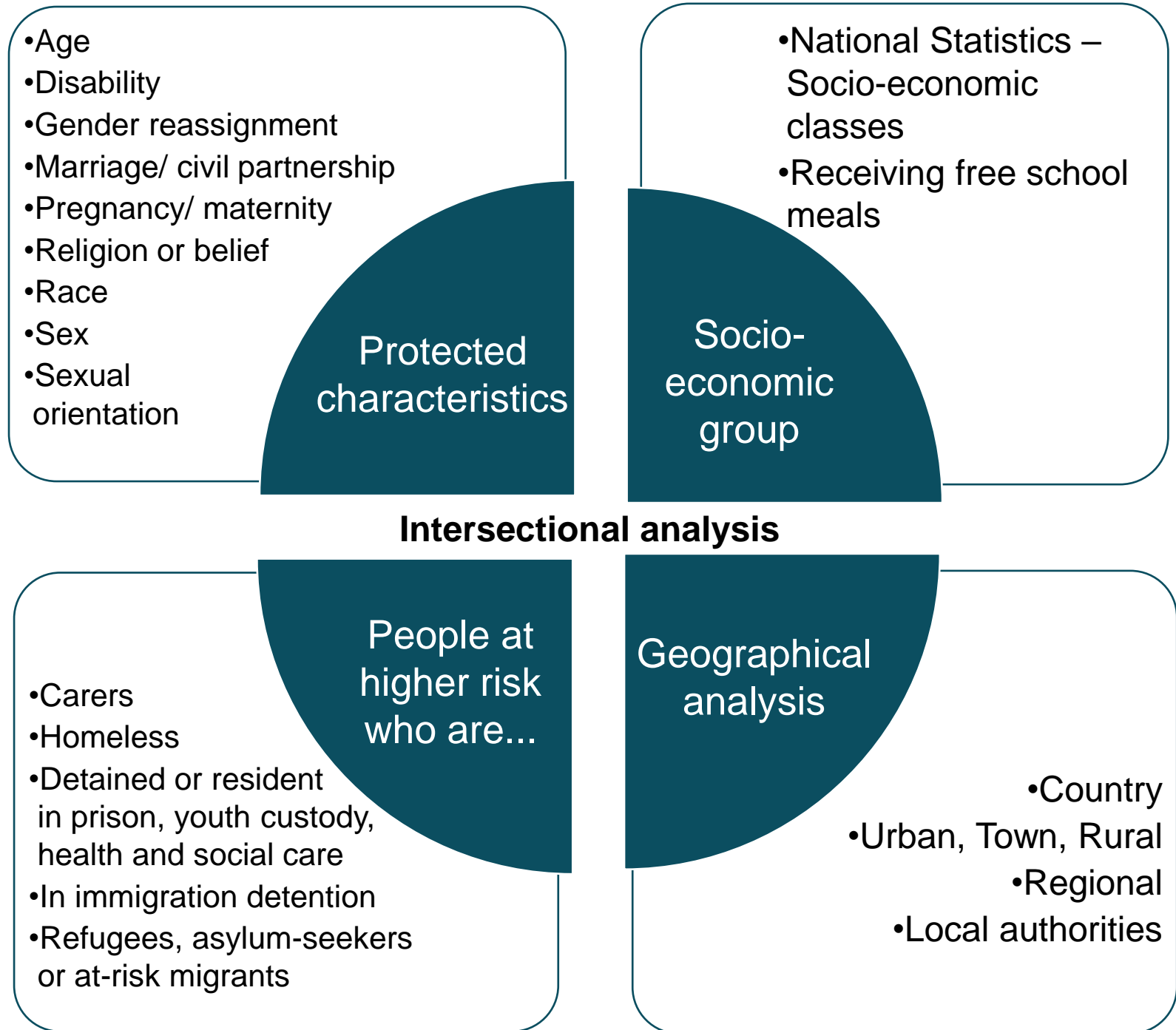
* Supplementary indicators

Evidence gathering - Statistical measures

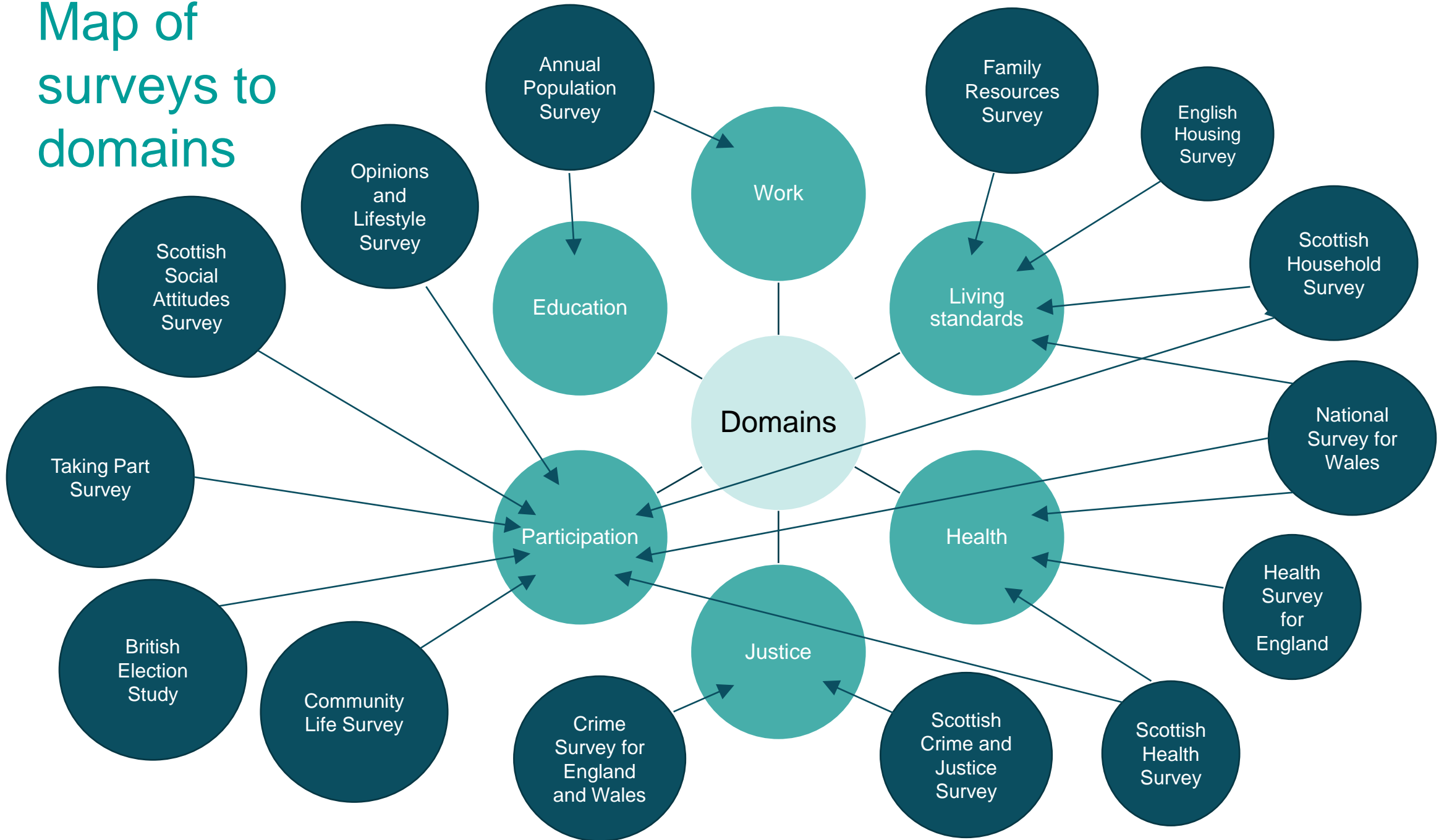
Over 50 measures

Cross-sectional analysis for each year

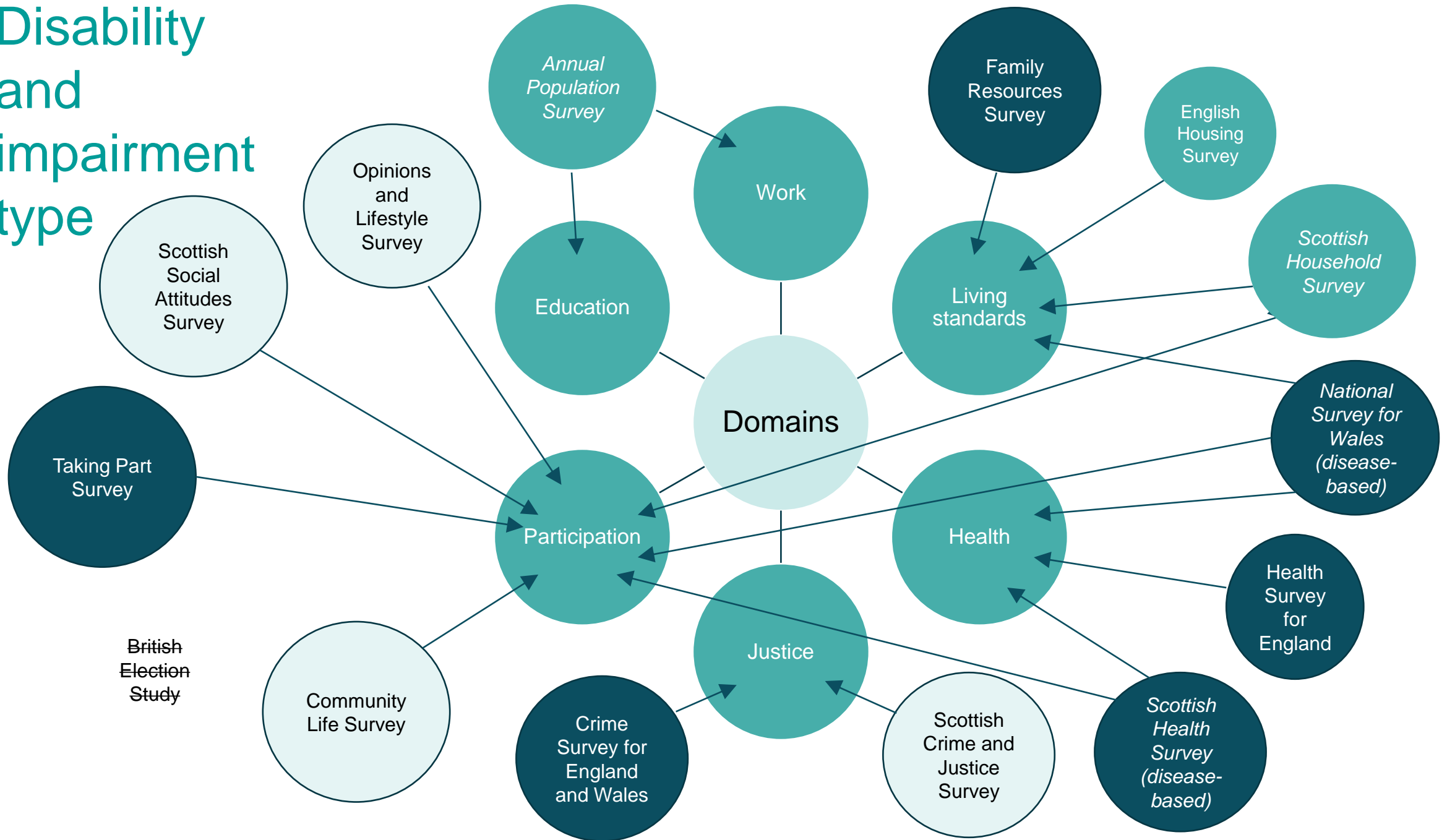
Change over time back to 2010/11 where possible



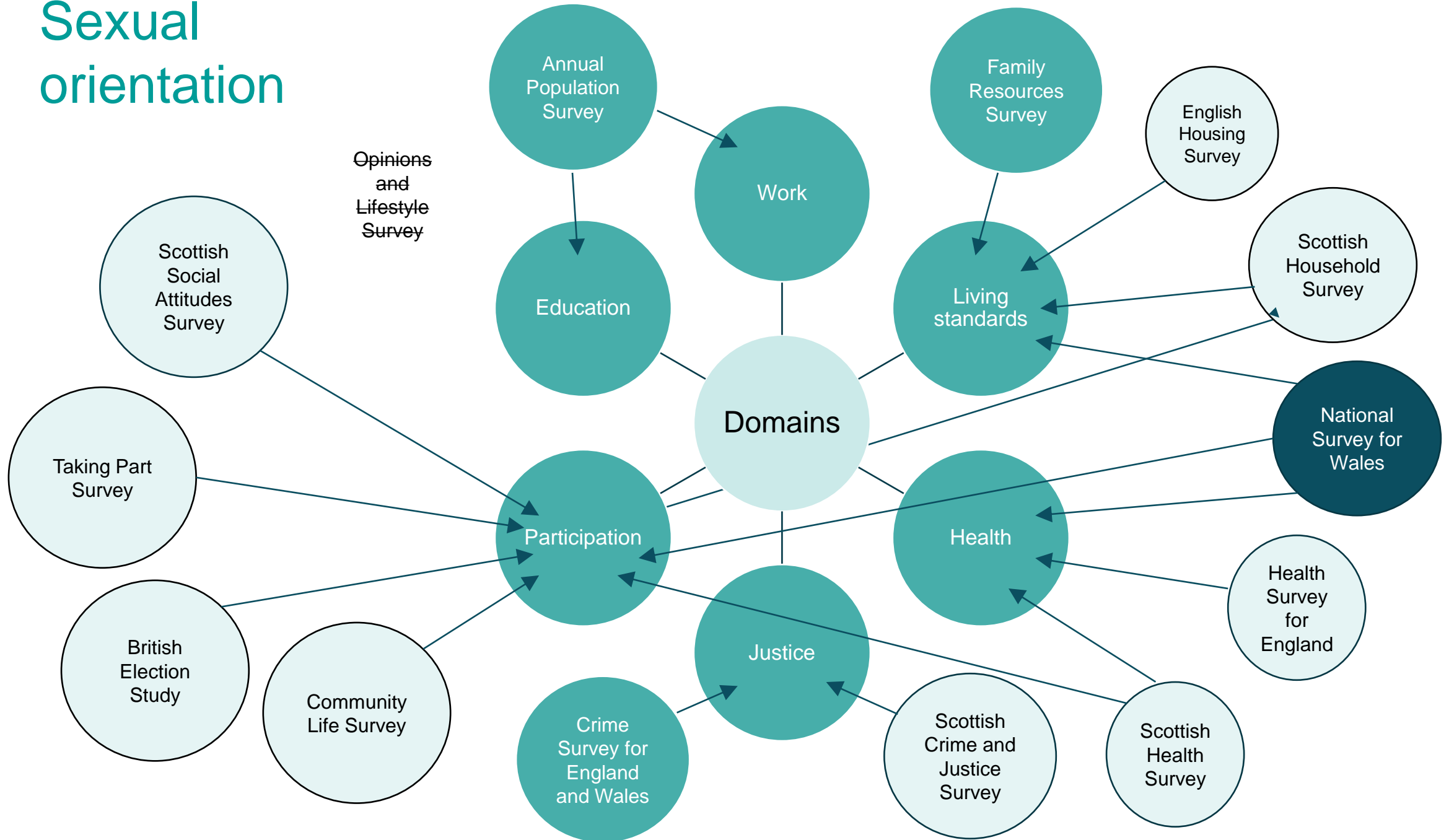
Map of surveys to domains



Disability and impairment type



Sexual orientation



Thank you